

Portage Community Historical Society News

Festival Schedule
Saturday June 23, 2018
10:00 am—4:00 pm

Country Music with Marsha Moore 10:00

Wolffgang Singers 11:00

Goodtime Cloggers Noon

Bonner Senior Singers 1:00

Watermelon eating contest 2:00

Wolffgang Singers 3:00

Kids Games and Fishing Derby 10 am—2 pm

Auction Drawing 4:00 pm

Lois and Wanda will be contacting members for pie donations.

We need donations of new or like new toys, stuffed animals and books for prizes for the kids games at the festival. Bring them to the barn museum on weekends.

Left off the flier but still a great attraction will be the Winamac Auto Club displaying their vintage cars.

We have our festival display in the window at the Portage Library in June.

Sign up to volunteer for two hours that day.

SOCIETY NEWS

Did you know our society was started in March 1988?

We are celebrating our 30th anniversary.

We received a monetary donation in Eva Udick's name. We thank her family for that and she will always be remembered as a valuable asset to our society.

Class of 1968

Phyllis Borg brought her collection to the museum of Portage High School Memorabilia for the Class of 1968 celebrating 50 years since they graduated.

President—Valeria Roach

Vice President—Anne Koehler

Secretary—Donna Smith

Treasurer— Valeria Roach

Board of Directors:

Barb Borg-Jenkins

Jim Franzen

Wanda Samuelson

Richard Turnak

Fred Untch

Honorary:

Lois Mollick

Another display is from Marsha Moore and it is a
tribute replica to

Dale Pugh's "WDLP Radio Room".

In Remembrance

Our sympathy goes to members who have lost a loved one recently.

Irene Roy, 98, mother of Patti Coppess passed March 19, 2018, Tage Borg, 96, father of Barbara Borg-Jenkins and Phyllis Borg, passed away March 26, 2018 , member Ed Gottschling, 91, passed away May 7, 2018 and Arthur Garrison, 76, father of member Ron Garrison passed away May 22, 2018.

Genealogy HowTo

Issue: May 1, 2018 newsletter@kindred2.com
<https://www.mytrees.com>

Will a DNA test reveal my family tree?

by Cynthia Carman

Usually the answer would be "no". A DNA test will only help you if you already have researched a good bit of your family tree and you want to confirm its validity or you have a specific question that only a DNA test could answer. DNA testing by itself cannot tell a person who their ancestors are. Using DNA tests in conjunction with traditional genealogical research, like what you might do at www.MyTrees.com, can break down some of the toughest brick walls.



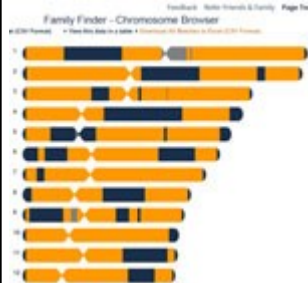
For instance, I had already done quite a bit of genealogy research, but after reading the book "Finding Family: My Search for Roots and the Secrets in My DNA" by Richard Hill, which I reviewed last year, I had serious questions about the possibility that I had been adopted. The book pointed out that men with AB positive blood types could not father a child with an O negative blood type. My blood type was O negative and my dad, when he was alive, had said his was AB positive. To answer this question, my sister and I took autosomal DNA tests and the matching segments were high enough to estimate that we were full siblings.

		Father's Blood Type				Child's Blood Type
		A	B	AB	O	
Mother's Blood Type	A	A or O	A,B,AB or O	A,B,or AB	A or O	
	B	A,B,AB or O	B or O	A,B,or AB	B or O	
	AB	A,B,or AB	A,B,or AB	A,B,or AB	A or B	
	O	A or O	B or O	A or B	O	

Notice I used the word "estimate" in the previous sentence. Autosomal DNA matching programs work by calculating an estimated relationship according to the number of matching segments in the various DNA strands. Each testing company uses a different criteria for determining a DNA match.

The DNA test also served as an estimate of proof that my mother was not adopted. In the family finder tool at FamilyTreeDNA comparisons are sorted according to the closest matches. Several of the DNA 2nd to 4th cousin matches in the FamilyTreeDNA database showed that their ancestors had the same surnames as my mother's family. Also their ancestors lived in the same county and state as my mother's family.

I tested with FamilyTreeDNA and I would recommend them over the other testing companies because of the tools they have that compare DNA segments.



My sister had tested with AncestryDNA. Fortunately she was able to upload her DNA results to FamilyTreeDNA, so a comparison could be done with my DNA test. It cost \$19 for her to create an account on FamilyTreeDNA, so we could use the familyfinder tools to see if our DNA was a close enough of a match to be full siblings.

It might have been better if both of us had tested through the same company at the start, but at the time, when I chose to have the test done, it wasn't clear to me what to do to accomplish my goal of confirming our sibling relationship. Here are some steps that may help you to make the most of your DNA testing experience.

Choosing a goal or purpose for taking a DNA test.

- Genealogy - finding cousins and proving your family tree
- Ethnicity - finding what my DNA says about my country of origin
- Adoption - finding unknown parents or other family
- Health - finding what health markers are in my DNA

We are on the web
<http://www.inpchs.com>



**PORTAGE
COMMUNITY
HISTORICAL
SOCIETY,
INC.**

P.O. Box 305
Portage, IN 46368

Phone: (219) 762-8349
E-mail: info@inpchs.com
<http://www.inpchs.com/>
<http://www.facebook.com/pchs88>

Memberships: Yearly Single \$20,
Family \$50, Business \$60

Saturday, June 23, 2018-
Summer Festival at Country-
side Park

Wednesday, August 15, 2018

Kevin Matthew Pazour: Talk
about Commodore David Porter

kevin@pocomuse.org

Cell 219-252-5209

Wednesday, October 17, 2018

Kenneth Schoon about his
new book: "Swedish Settle-
ments on the South Shore of
Lake Michigan."

Portage Community Historical Society Bi-monthly meeting

Wednesday, August 15, 2018

7:00 pm

Woodland Park

Public Welcomed and refreshments will be served



**"Who in the World is
Commodore David Porter?"**

Aug.15 (Wed.) at 7PM

at Woodland Park, main building
2100 Willowcreek Road, Portage, IN

Kevin Pazour, curator of the Porter County Museum, will
give a special presentation on the famous naval officer
Porter County was named for.

Brought to you by
**THE PORTAGE COMMUNITY
HISTORICAL SOCIETY**